



# AT 530 ALUMINIUM-FRONT DOOR





## CHARACTERISTICS

 **Thermal insulation** (in W/m<sup>2</sup>K)  
U<sub>D</sub> up to 0,69

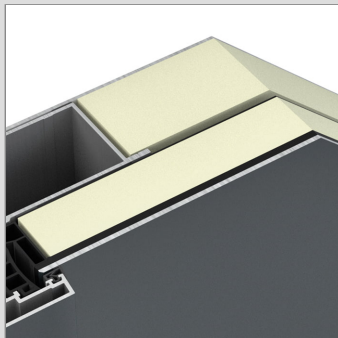
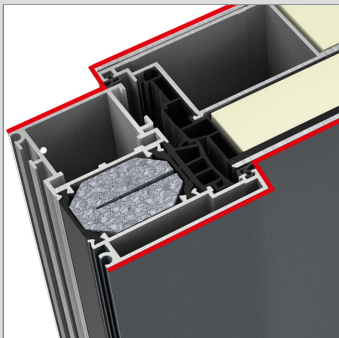
 **Sound reduction** (in dB)  
up to 34

 **Security**  
up to RC2

 **Locking**  
Multi-locking

 **Profile depth** (in mm)  
93

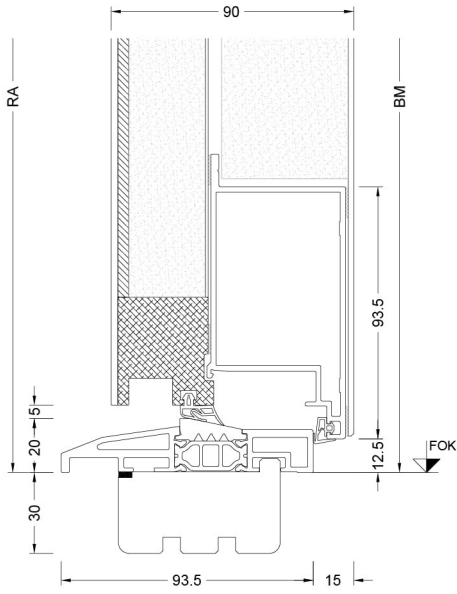
**I-tec Open**



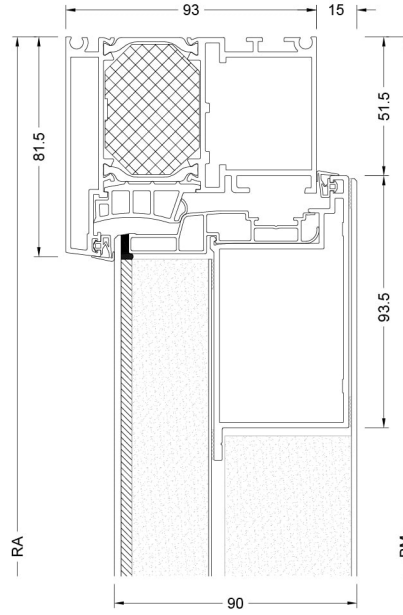
The design of the entire door sash is flush with a square edge towards the frame both inside and outside . 3-chamber frame profile with insulating foam core provides maximum thermal insulation. A wide range of options and customised designs are available. Standard 5-point locking provides maximum security.

## Cuts

Schnitt unten / Section - bottom



Schnitt seitlich, oben / Section - side top





- BM Bestellmaß / Ordering size
- FOK Fußbodenoberkante / Finished floor level
- GM Glasmaß / Glass size
- RA Rahmenseitenmaß / Outside frame size
- TM Teilungsmaß / Division size

# AT 540 ALUMINIUM-FRONT DOOR





## CHARACTERISTICS

 **Thermal insulation** (in W/m<sup>2</sup>K)  
U<sub>D</sub> up to 0,75

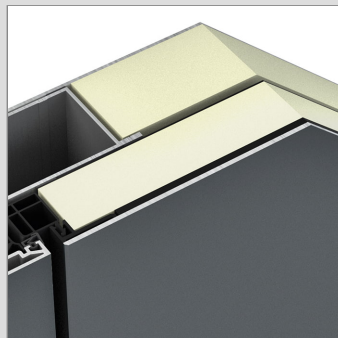
 **Sound reduction** (in dB)  
up to 35

 **Security**  
up to RC2

 **Locking**  
Multi-locking

 **Profile depth** (in mm)  
93

**I-tec** Open

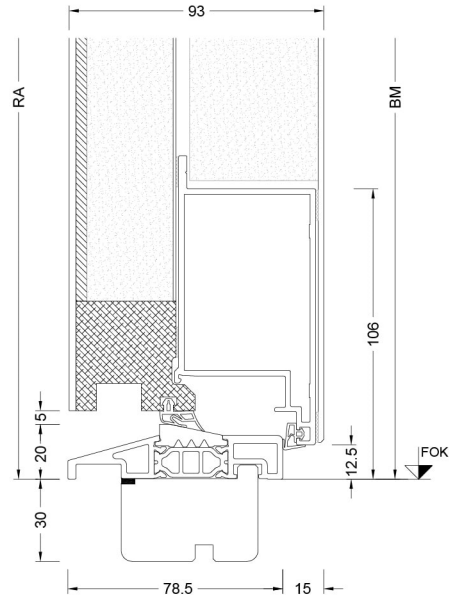


The design of this door is completely flush both inside and outside, making it perfectly suited to modern and unique architecture.

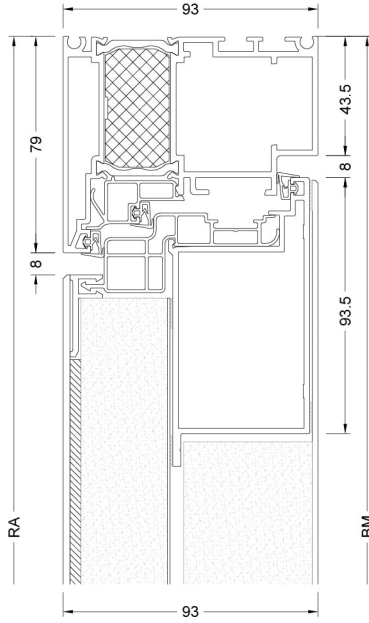
The concealed door hinge is integrated as standard. The two chambers with insulated foam core ensure excellent climatic stability. Standard 5-point locking provides maximum security.

## Cuts

Schnitt unten / Section - bottom



Schnitt seitlich, oben / Section - side top



- BM Bestellmaß / Ordering size
- FOK Fußbodeneoberkante / Finished floor level
- GM Glasmaß / Glass size
- RA Rahmenseitenmaß / Outside frame size
- TM Teilungsmaß / Division size